

Schools for 13 Parsons Pl:

St. Edwards
K— Gr. 6
Frank Roberts Jr. High
Gr. 7— Gr. 9
Queen Elizabeth Regional High
Gr. 10 — Gr. 12



Places of Worship

ROMAN CATHOLIC

St. Edward's Church, Long Shore Road, Kelligrews
St. Thomas Villa Nova Church, Manuels

ANGLICAN

All Saints Church, Main Highway, Foxtrap
St. John the Evangelist Church, Main Highway, Topsail
St. Peter's Church, Main Highway, Upper Gullies

JEHOVAH WITNESSES

Kingdom Hall of Jehovah's Witnesses, Middle Bight
Road, Kelligrews

PENTECOSTAL

Pentecostal Church, Foxtrap Access Road
Pentecostal Hope Church, Garden Road, Seal Cove

SALVATION ARMY

Salvation Army Church, Main Highway, Long Pond

SEVENTH DAY ADVENTIST

Seventh Day Adventist Church, Main Highway, Upper
Gullies

UNITED

Topsail United Church, Main Highway, Topsail

JOAN BRAGG
www.nlhouseandhomes.ca

Open House
Sunday Oct 4 2 — 4 pm

13 PARSONS PL
CONCEPTION BAY SOUTH

\$199,900



Joan Bragg

REALTOR®

Re/Max East Coast Realty Ltd.

709-746-8700 cell

jbragg@remax.nf.ca

RE/MAX 
Outstanding Agents.
Outstanding Results.
sm

**13 Parsons Pl –Open House
Sunday Oct 4 2 – 4 pm**

Room Sizes Main Level

Kitchen	8'11" x 11'
Eating Area	8' x 8'
Living	12'6" x 15'6"
1st Bdrm	10'5" x 11'
2nd Bdrm	9' x 10'
3rd Bdrm	9' x 10'
Mn Flr bath	4pc

Lot size 100 x 100 (approx)
New survey & real property report to be provided upon closing

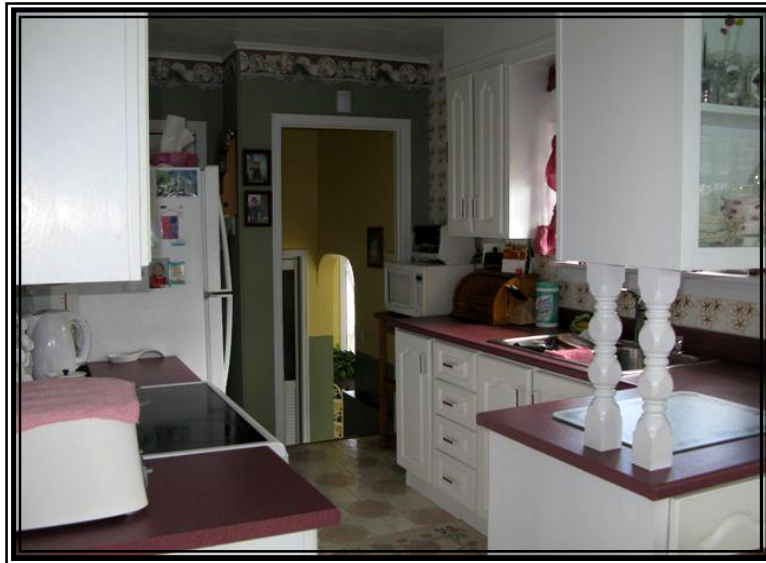


Immaculate 3 plus one bedroom bungalow with detached garage. Some hardwood flooring. Basement is completed and includes an additional 3 pc bath.

Cozy and bright, this home is located in Foxtrap on a large semi-serviced lot. Municipal water and septic sewer system. Electric and oil furnace. Paved driveway.

Please note** baby barn not included.

****The above information displayed is believed to be accurate but should not be relied upon by a buyer without personal verification.**



**Joan Bragg
REALTOR®
Re/Max East Coast Realty Ltd.
709-834-2066 office
709-746-8700 cell**

